

Fishers Canyon Open Space Master Plan Community Online Survey #2 Community Meeting #1 Workshop Survey

Engagement Summary



OVERVIEW: This was the second survey distributed to the community after the first community meeting that took place on April 24, 2024. The survey included links to a video of the community meeting presentation as well as the same exhibits and questions. The purpose of this online survey was to provide the public who could not attend the public meeting in person a chance to weigh in on emerging scenarios for Fishers Canyon Open Space enhancements and learn more about initial site studies.

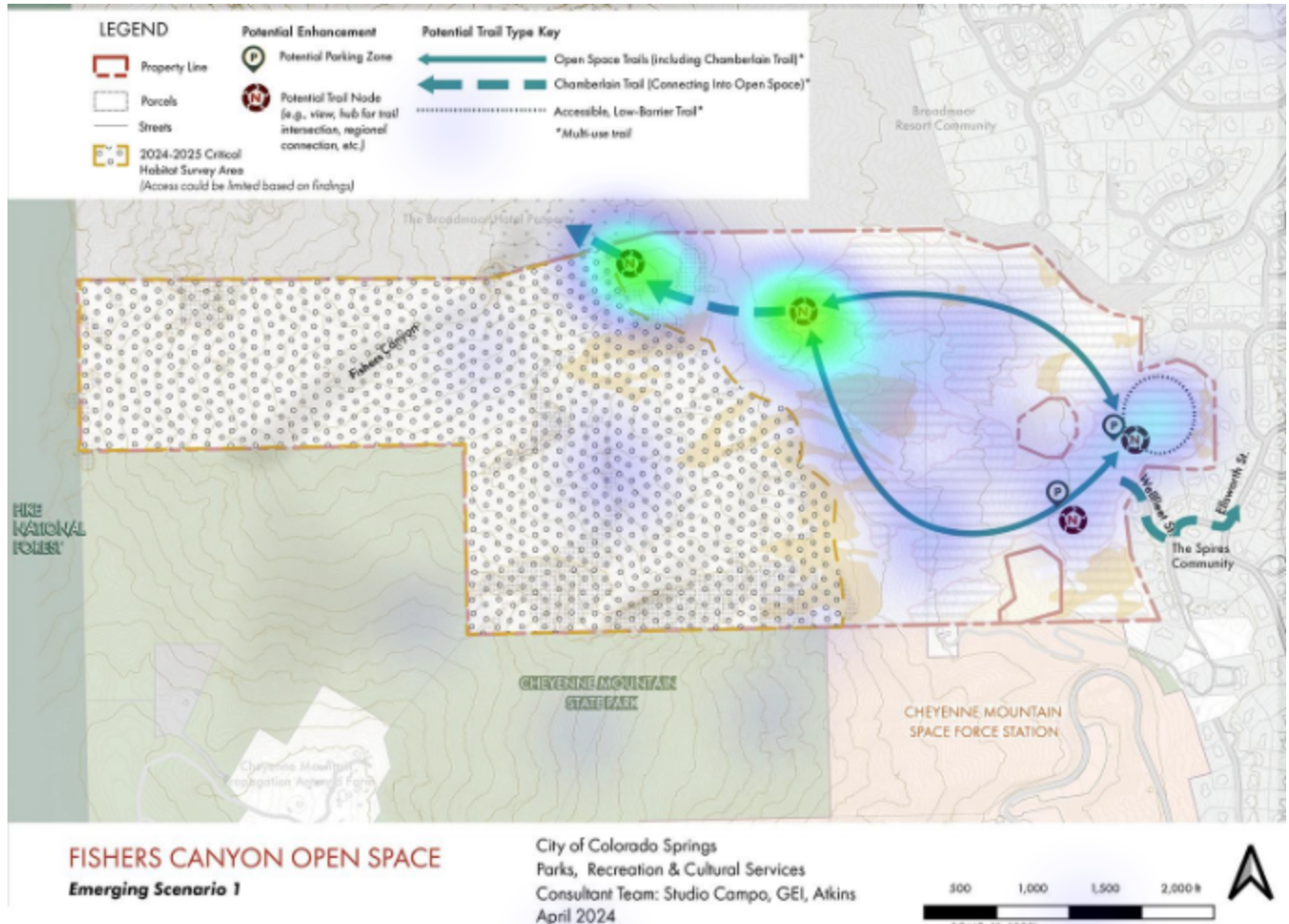
Over 220 participants (mostly from the 80906 zip code) took the online survey. Of the 220 surveyed public, 140 stated they had not attended the public meeting on April 24. The survey was initially open to the public for three weeks and then extended to provide more opportunity for participation; the survey was open to the public May 3 through June 2, 2024 (four weeks).

PROMOTION: The survey link was promoted through the City's social media platform, social media short videos, distribution to the newsletter list, distribution to the focus group stakeholder contacts and on the City's webpage.

SURVEY DATA QUALITY: The survey platform utilized Qualtrics survey analytics. Qualtrics uses a quality response tracking system to identify potential bots, unanswered questions and repeat survey responses from same IP address (potential "ballot stuffing"). The overall survey had a 88% (good) response rating; Qualtrics identified 22 responses that came from potential "ballot stuffing" and filtered those out of the report. The reCAPTCHA (bot detector) score is 1.0 for the survey instrument, which indicates a very good interaction with participants and low indication of bot or fraudulent survey responses.

Q1 - A diagram of scenario 1 is provided below. What area do you particularly like about scenario 1? Please click only one area. A larger PDF is available at this link [Fishers Scenario 1 PDF](#)

81 Responses



Q2 - What suggestions do you have to improve scenario 1?

129 Responses

What suggestions do you have to improve scenario 1?

Adequate horse trailer parking for equestrian trails

It's too limited and needs more trails.

None

Add mountain bike specific trails.

Horse trailer parking

Now that Area one is part of a large fuels mitigation effort, it's created meadow-like grassy areas with large trees above which will encourage off-trail wandering. Will that be approved for Area 1?

Parking needs to be a maximum

Adequate trailer parking! Ensure Equestrian's have access to trails...

Connection with other open spaces are critical, providing access to all no-motorized activities. My interest is to expand access for the horseback riding for the area. Trailing parking adjacent to trailhead is critical.

Locate and limit parking to prevent traffic that overwhelms neighborhood streets and overcrowding in the open space. Designated area for off leash dogs.

minimal use/impact with higher elevation left undeveloped, accessible and low barrier trails

Move parking further from the Welfleet entrance to reduce potentially disruptive traffic and improper activities at the trailhead / parking area.

I like that there are multiple parking areas. One parking area could open first and if there is too much demand, another parking can open up. Perhaps best that they are both open at the same time to completely prevent hiker parking in the neighborhood.

more trail connections between the "Nodes"

Keep trails to the easier terrain (which you are doing).

More than two trails to get up and down the open space

A figure 8 trail instead of a simple loop

1. Re-evaluate the area of Scenario 1 based on the (future) outcome of your "critical habitat" survey. The ratio of the two zones seems arbitrary and somewhat misleading at this point in time since the survey has not been completed. The implication of scenario 1 is that the public can only use 1/2 of Fishers Canyon Open Space. This in spite of the #1 Community Input Theme of "Provide access to recreational opportunities like hiking and biking". Scenario 1 does little to satisfy this #1 goal. Suggestion: Delete Scenario 1 and go with Scenario 2.

Additional connection showing access and connection to Broadmoore resort community.

this scenario appears to have very limited usage (trails) of a large open space

Parking should be set back from the homes on Welfleet street to minimize the interference with the natural enjoyment of the homeowners there.

Needs access to Cheyenne Mt State Park. Entrance via this route instead of through existing neighborhood would be considerate of individuals living in that area. (Pls note I do NOT live in that area.)

Single use trails. Make sure private property at boundaries are not violated by park users.

Are any of the boulders suitable for establishing a bouldering area?

Include options for winter sports like cross country or AT skiing

Find another access point. The residents in this area did not build a million plus home to have this scenario planted in their back yard. I personally do not want the traffic streaming by my house all day long. This is a ridiculous plan for this area and hurting our home values.

Add connector trails to Cheyenne Mountain State Park and Chamberlain Trail.

Eliminate connection to "Chamberlain Trail

None

Request the Broadmoor Hotel Property owners to allow entry/exit access - could make this happen in at least two areas. Move current parking area away from Wellfleet homes.

To areas to enter and exit

Make a connection through Cheyenne mtn state park.

The entire space should be closed off as an environmentally sensitive area and no human activity allowed of any kind!

Ensure adequate parking

Mountain bike spur trails would be important, using the naturally present large boulders to develop skill sections and natural progression.

Create access to Cheyenne mountain state park

Are there any other vistas or points of interest that could be accessed by branching off of the southern open space trail near or in the critical habitat area that could be included in the plan?

This first scenario is very plain. Does not offer a lot of opportunity for multi use trails, single sue trails, and is not beneficial use for the space provided.

Give land back to indigenous peoples

Ensure there is a solid connection to Cheyenne mountain state park and to the twilight trails and Stratton open space

DO NOT ALLOW ONLY ONE ACCESS POINT FROM WELLFLEET - there are at LEAST FOUR OTHER ACCESS POINTS -

Love the idea of new rock climbing area.

Suggest to have more trails to allow users to experience more of the space while staying in designated areas

I like the placement of the low barrier trail. There needs to be a trail option similar to the Starsmore Trail in North Cheyenne Canon Park that anyone, regardless of ability can do. Our City open spaces lack opportunities for people with disabilities to get outdoors.

How does this connect to the state park? Any additional neighborhood access points?

I would expect a trail connection to Cheyenne Mountain State Park but don't see one

Find another area for a trailhead. Also consider closing the area in the winter. There is no snow plowing and very icy roads leading to the trailhead. It will also protect bear hibernation dens.

add connections to MacNeil and Cheyenne Mountain State Park

Minimal intrusion into the habitat but allows public to enjoy the Space without extensive effort.

Easy access to Wellfleet Street for parking. The potential trails can be used by a wide variety of hikers.

prioritize access for rock climbing. We already have many parks in town to hike, but only 3 to rock climb at (GOG, RROC, NCC)

Toilets and trash near the parking areas should be included.

I like the idea of connecting Chamberlain into Fisher Canyon

Please insure parking on the site to provide accessibility for the whole city.

Move the parking so they are further away from the homes.

Parking needs to be further away from the homes on Wellfleet, so as not to impinge on the neighbor's privacy (especially the neighbors who just built their home thinking they were moving in to a nice quiet cul de sac. There needs to be another look at entry/exit point. There can not just be one point of ingress/egress. Please take another look - a serious effort - in developing at least two additional entry/exit points. Scenario 1 trail structure looks good - especially initially so the city can monitor the impact of opening this area to the public. Please think about designating the streets (Wellfleet/Ellsworth) as residential parking only. Currently the Spires HOA. states that there is no street parking; however, enforcement of this stipulation is hit or miss.

Eliminate one parking lot and add a trail to connect to the top loop of the Dixon Trail in Cheyenne Mountain Park. Maximize protection of all natural habitats and the natural mountain view. Enforce respect of natural environment (no noise, pack out trash, dogs on leash, etc.). Plant natural wild flowers that will spread. Buy the Spires drainage dams and address the danger to hikers (maybe put rails on each side of the dam so no hiker falls). Finish fire mitigation. Add natural looking fences to separate private property from hikers.

I like what looks like a loop hike

Trail connecting to rocking tree grove

Its simple, it can be possibly funded, but the parking and access are coming from a culdesac that has not traffic and is suddenly going have hundreds of cars. there are no through streets. This point was raised by every table and you have chosen to ignore it.

As a resident, parking looks way too close to housing. One of those parking areas is directly behind at least one home. It is absolutely essential that parking is not visible from any homes and is far enough away so as not to increase noise pollution for these residents. The people on Wellfleet street will be highly impacted by the additional traffic, so alternative entrances should be explored further.

If Mexican Spotted Owl habitat is identified seasonal access to the upper part of the property should be explored.

Trail access SHOULD NOT be from Wellfleet Street. This is a private residential area. There should be no parking areas. Residents DO NOT want this public trail access. It is not safe!

I would like to see one low impact trail available to the top of Cheyenne Mountain, would most likely need to be narrow and for hiking only.

None

Would like to see a couple of single-use trails so that people hiking with or without dogs don't get run over by bikes. Without knowing the distance, the low-barrier trail seems to be close to the back of the homes on Ellsworth as well as the side of the home on Wellfleet. Our quiet community will no longer be quiet!

would be nice to have more loops/options/nodes within the new trail system

I like scenario 2. More trails are better.

Needs more trails

Add a cut through between the open space trail so you can still do that but if you need to come back you can turn around at the 1/2 way mark.

Add a trail to connect to the Dixon trail so hikers can park at Cheyenne Mountain park and not go through the neighborhood. Have only one small parking lot that is hidden from view of the houses. Leave trees and make trails beneath the canopy of the trees. Keep it simple and maintain the natural environment and habitats for black bears, turkeys, owls, bobcats, and deer. Enforce quiet, packing out trash,, dogs on leashes, picking up dog poop (including the bags - some neighbors throw poop bags instead of carrying them home).

other small trails, another way to access the park or have it a pay to park for non neighbors. Free parking somewhere out of the neighborhood that has a trail connecting to fishers.

No public access from Wellfleet. Trails should be accessed from Chamberlain only.

Use upper trail route as Main Primary, away from housing areas.

Combine the 2 parking zones for the purpose of using the resulting long/narrow surface lot as a firebreak for the Spires neighborhood

Access to Cheyenne Mountain State Park from Fishers

I like the connection north to the ultimate Chamberlain trail. It would be nice to connect to cheyenne mountain state park with limited-low impact backcountry trail

Leaves more space for solitude and less impact on the environment

create a downhill mountain bike trail

Connection to the state park and chamberlain

More trail options, hiking only trails plus biking only like chutes downhill. Also rock climbing access would be amazing. Plus connecting Cheyenne Mtn state park and chamberlain trail

VERY limited parking and NO overflow STREET parking. NO early morning car access or late nite access.

This scenario seems to optimize habitat preservation without balancing recreation use. This may encourage users to take it upon themselves to create unsanctioned trails in the area.

One way in and out seems pretty dangerous and doesn't mitigate flow of traffic or impact to residential area

Recommend one parking area rather than two - the most northern lot looks to be the flattest with the best access. Connecting to the Chamberlain trail is great, but having only two trails could get quite crowded with people/dogs/bikes.

Keep the two designated parking areas, with the one focused on the accessible low barrier trail. This provides separation between slower and faster paced users. Consider providing parking access to the non accessible low barrier parking area from CMSP or from CMSFS to lesson traffic on Ellsworth and the Spires neighborhood.

More trails. Another parking option on the north side if possible.

This looks amazing! Love the access off Wellfleet St. The more trails, the better! Would love some mountain bike trails in this area.

It would be nice to connect to CMSP by a lower, easier route. Bend that lower trail toward my dot.

Eliminate any connection to the pipe dream of the Chamberlain trail cutting through private property and the Zoo. Ensure that permitted uses of the area exclude any type of flame or spark producing activity

Add chamberly trail connection to Cheyenne mtn State Park, consider additional loops lower to minimize social trail development.

Looks very dangerous to the West!

Really specific signage to try to keep the area clean, like carrying out dog waste bags? That key step is not understood

Looks good if it's not possible to have trails further west

Since it appears that there are only two options/scenarios, recommend relocating the parking further away from the entrance and neighborhood on Wellfleet; ensure the trails are ONLY for hikers and mountain climbers and not for NOT for horseback riding as this is very damaging to trails/etc and with only one access point....horse trailers would be very imposing/disruptive and potentially damaging to the nearby neighborhood and neighborhood roads. I would say the same for mountain bikers....since there is only one access point and to limit the amount of trails for this space. there are plenty of other places in the city for mountain bikers..

Less is more! (Less trees cut down, less trails, less impact to natural habitats, less road, less cement, etc.) During the extreme fire mitigation activity, you cut down trees that wild turkeys and birds of prey nested in, you destroyed black bear beds, and you disrupted bobcat dens. (those of us that live here knew where these animals lived)

A large enough parking lot as to not disrupt the neighborhood, restrooms, dog waste receptacles.

From the node that connects to the Chamberlain trail, add a trail that connects to the upper loop of the Dixon Trail in Cheyenne Mountain State Park. Eliminate one of the parking lots (have only a small lot that requires a parking fee). Run the parking like at The Incline (have people ride a shuttle from a distant parking lot). Your fire mitigation has already impacted habitat for the black bears, mountain lions, turkeys, and falcons -- their presence on Ellsworth, Irvington Court, and Wellfleet already seems more prominent this year. Please keep it simple and natural as much as possible, and whatever you build, please do it in a minimal way so that it maintains the mountain view and natural habitats of these animals. A 4-foot wide trail under the canopy of the trees is less visible and impacts the habitat much less than paved roads, parking lots, picnic tables, and trash cans, and restrooms..

Move potential trail nodes and parking zone further into the open space sufficiently away from homes on Wellfleet, Irvington, and Ellsworth so as not to be noisy; there should be an effective buffer. The trails appear to be bidirectional, rather than one way to prevent backups. Limit visitors and parking needs by using a reservation system. This would reduce impact to existing neighborhood.

I think it may be a good plan to connect the Chamberlain Trail. I prefer scenario 1 due to the lower impact on the environment and the neighborhood.

Ensure that parking gate is closed after hours.

Open Space trails

I like that there are a minimal amount of trails. These trails should only be used for hiking (no mountain bikes or horses, except as through travelers on the Chamberlain Trail). The big problem is the single point of access through the existing neighborhood and the issues this will bring to current residents. If this single access point just can't be moved to a different location, then the proposed parking lot should be moved much further back (i.e. deeper) into the Fisher's Canyon property, as far away from existing residences as possible. Additionally/ any parking lot on the property should have limited, gated access hours (i.e. dawn to dusk),

Remove the southern parking area that is between the dams. Consolidate parking in the northern area that is flatter and has the accessible trails.

Please incorporate additional entry/exit points. Based on other open space areas in the city, ie., Red Rocks Canyon, there could potentially be a lot of visitors placing much more traffic through Ellsworth and Wellfleet (currently a nice quiet cul de sac).

Move trail nodes/parking further from parcel boundaries

Eliminate parking lots and replace them with a vehicle drop-off and pick-up area (contract with Broadmoor or another company for hourly shuttle transportation during warm months). Have only two trails: 1 - access to the Chamberlain trail, and 2-add a connection up high to the Dixon trail at Cheyenne Mountain Park so hikers don't have to go through the neighborhood to get to the park. Minimize impact to the natural environment and habitats for deer, wild cats, turkeys, owls, hawks, falcons, bears, etc. Minimize noise & trash. Buy drainage basins from the Spires Neighborhood so that public hikers don't fall off the dams and sue the Spires HOA. We don't need the accessible or dog trails. We don't need mountain biking trails, because that will impact water drainage issues for the houses below, and it will impact wildlife trails for deer, turkeys, bear, etc. .

Eliminate lower trail loops and only include the chamberlain trail connection and add a connection to the Dixon trail for access to the state park. Eliminate parking lots and replace them with a pick up and drop off loop only. Minimize impact to deer, bears, turkeys, bobcats, mountain lions, birds of prey, etc. Mitigate dangers of hiking across the two dams in the Spires drainage areas (and buy the drainage dam property)

Access to Chamberlain trail is good. Also like the accessible low barrier trail direct from the parking area. Seems there are only two open space trails, completing a loop? I wonder if another trail or two is warranted in the eastern slope.

have adequate parking to keep cars off the streets.

I like this scenario. It limits impact upon the ecosystem and provides a buffer between the surrounding communities. The easternmost approach is preferred.

Maybe creating two entrances not just one off Ellsworth

I am interested in parking and traffic plans. It's a residential neighborhood.

Improve access to top of canyon and geologic features.

Amount of trails seems very limited

Add additional trails and connections to adjacent lands. My main concern with this plan is that it looks like a community park for the local HOA, not a city park.

Increase public access. This looks like an unbalanced catering to locals only, not the general public.

Add one or more downhill-only bike trails (in the middle) to allow riding loops.

A connection to Cheyenne mountain state park would be great

trail connections to MacNeil and to CMSP

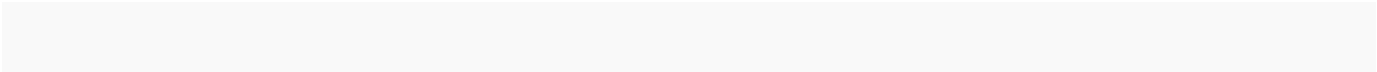
More trails, this plan only uses about a third of the canyon

Ban dogs--local trails, other than the state park, are a foul mess of dog waste and plastic bags and leashless dogs endanger wildlife, ecosystems, and other users

Looks good as is.

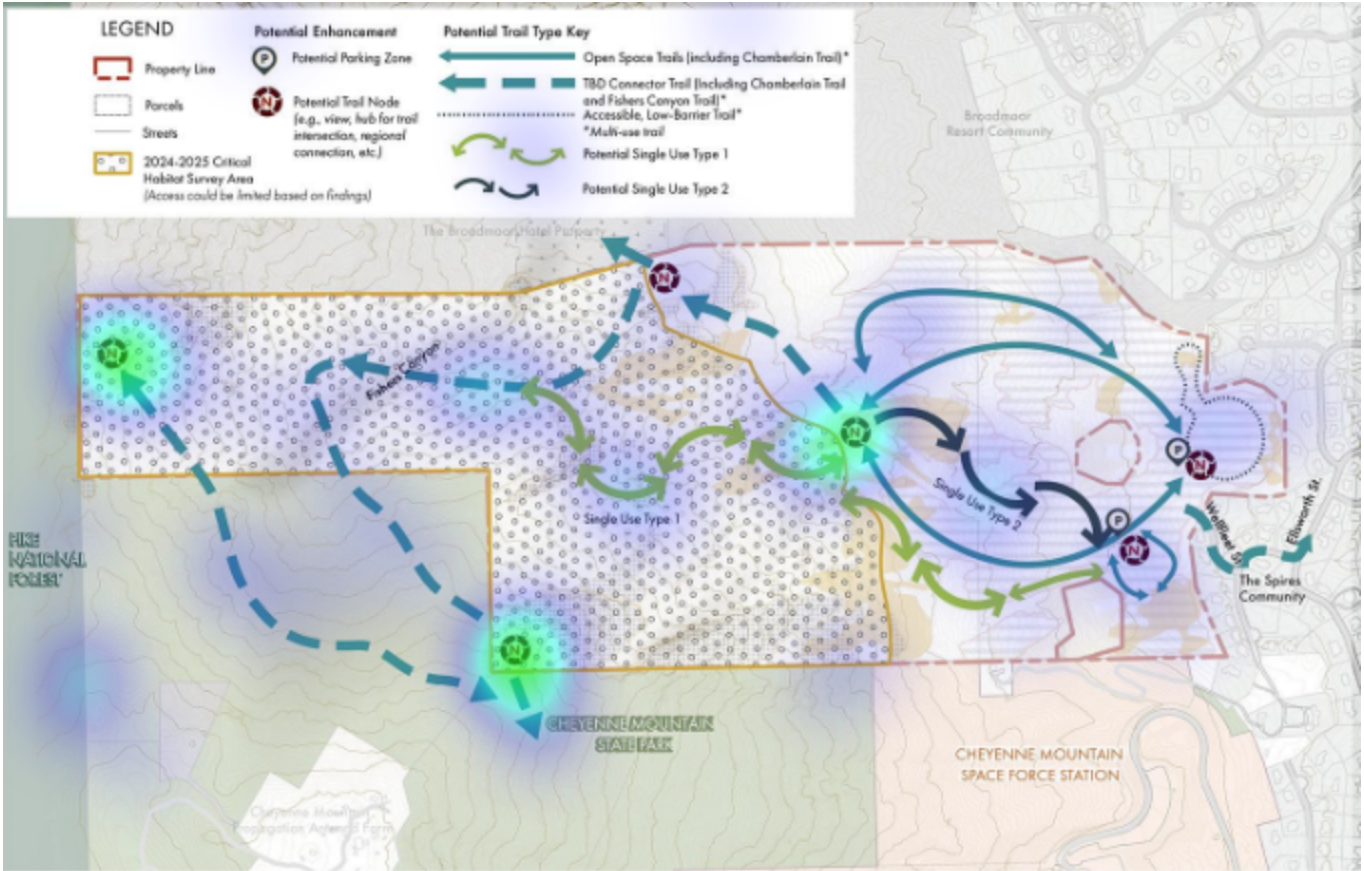
Create more trails.

A third trail from the parking lot, spreading hikers out more rather than condensing them on just 2 trails.



Q3 - A diagram of scenario 2 is provided below. What area do you particularly like about emerging scenario 2? Please click only one area. A larger PDF is available at this link Fishers Scenario 2 PDF

90 Responses



Q4 - What suggestions do you have to improve scenario 2?

148 Responses

What suggestions do you have to improve scenario 2?

Can you insure that the risks of the steeper trails to the west can be mitigated?

Adequate horse trailer parking and equestrian trails

Ensure adequate trailer parking for horse trailers.

Provide adequate parking for equestrians and possible connections to Cheyenne Mountain State Park

I like scenario 2 better than 1 because it has more trail options.

Add additional mountain bike only downhill sections of trail.

Connector trail

It would be great to have a link to the equestrian trails from Cheyenne mountain state park.

Maybe have the connector to CMSP a little further southeast where the terrain is less harsh

Ensure access to Chamberlain Trail, trailer parking, and future Cheyenne Mtn State Park., ensure equestrian's have access.,

Access to as much of the new area is important with connectors to Cheyenne Canyon and Cheyenne Mountain State Park. Access and facilities for all non-motorized, With the special needs of the equestrian users.

Locate and limit parking to prevent traffic that overwhelms neighborhood streets and overcrowding in the open space. Designated area for off leash dogs.

Too much trail work in scenario 2 and the associated habitat disruption/ Favor Scenario 1.io 1

connection with State Park trails

Again, moving the parking areas would be beneficial. The connections to other areas are great ideas - that could reduce access at the Wellfleet entrance and increase opportunities for use of the area.

As a local who live on Ellsworth Street near Wellfleet, I am very excited about the possibility of a local connection up to Cheyenne Mountains State Park and Pike National Forest. I could leave from my house and go camping for several days of beautiful challenging routes.

multi-use trail to the state park trail system

Restrict rock climbing if there are nesting raptors. Not only are Mexican Spotted owls a possibility, but peregrine falcons and prairie falcons may also be using the rock outcrops for nesting and foraging areas.

I like the potential access to Cheyenne Mountain State Park, but I do not like that the access point cuts through the critical habitat survey area. I also do not like that there are several potential single use type trails that cut into the critical habitat survey area.

Trail along the ridge

Overall I like Scenario 2 because the scenario: 1) includes trails throughout the entire area and 2) especially includes single use trails(which were not included in Scenario 1). Regarding improvement suggestions. I would like to see the open space trails extended to the west. (You have not shared any information on the constraints that limit the open use trails to only the eastern portion.) and 2) I also have two concerns that relate to fire dangers: A) Is the area going to be fenced in with a fence that prevents egress in case of a fire? and B) How are people using the western side of Fishers Canyon going to get out? The distance to the entry point appears to be at least 2 miles Please consider the need for some "emergency" dirt roads abutting the Fishers Canyon's southern boundary line from Cheyenne Mnt. State Park and NORAD.

reduce the length of Single use type 1. The upper connector trails appear to be in habitat restricted areas.

Has there been any inclusion of PPCA regarding possible climbing sites in the area, and if so planning for trail access?

The Spires neighborhood has NO access to trails presently and anyone living in this area has to drive out of the area to hike a trail. To access Cheyenne Mountain State Park, one has to drive there right now. This would provide access to the park from this neighborhood. So despite increased traffic, etc. these trails will ALSO improve the outdoor experience for the residents in the Spires.

Connection to Cheyenne mountain state park should be a priority

This scenario much preferred - better connectivity to other parks

Ensure sufficient parking for the likely increased trail users

Same as above. I don't approve of this open space being developed for foot traffic in my neighborhood.

reduce number of trails in the eastern portion as parking may not support this much access

I like the connections to Chamberlain, CMSP and the top of the mountain (if it goes there?). Trails need to be sustainable but I advocate for relatively steep and challenging rather than endless switchbacks.

Unsure about ways to improve scenario 2.

Again eliminate connection to chamberlain trail to reduce fire danger

I live just down the street and it is very quiet. I want it to stay that way and do not want a bunch of traffic near where my small kids are playing. This option seems like it would attract more people. I want people to have access but would prefer it not be in a residential area. It seems feasible to connect much of this through Cheyenne mountain state park and an easement on the base.

This scenario is 'too much,' especially if there is only one entry/exit area. Parking needs to be away from Wellfleet homes.

To areas for cars to enter and exit

Connect through Pike national forest not Broadmoore.

I like the idea of continuation into Cheyenne Mountain State Park.

There is NOTHING good about opening a public park in our back yard! We moved here because it is a beautiful quiet neighborhood and it seems all you city planner people know how to do is RUIN perfectly good neighborhoods!

Initiate connections to state park, emphasize hiking over mountain biking trails.

Accessing the high point of the space is key for many COS users. Bike and hike only trails would be helpful and bike only trails should be advanced and expert level.

Remove the green trail and top eastern trail

I like the second scenario has some single use opportunity for people on mountain bikes to not have to be concerned of slowing down for, or coming into contact with hikers. It is a better use of the space that is provide. Small off shoot trails that dead end to rock climbing areas would be great for those with that hobby as well.

Utilize the single use directional trails for mountain biking

i worru about the impact on the owl. though I do like the connector trail in theory

Give land back to indigenous stewards

Directional down hill bike trail would be welcome to deconflict hiking and biking user groups

As a concerned neighbor, we are fearful of arson, drug use, law enforcement and access - keep it wild and use Wellfleet only as an emergency access

Work towards single use single direction for greater diversity in gravity focused trails. please? Race teams need practice grounds along the front range.

Expand additional trail connections to USFS and CMSP on the top

Do not include single use trails.

This plan would be enhanced with the inclusion of equestrian friendly trails.

I like the additional trials, especially up the canyon and connecting into Pike NF. Please get rid of the northeastern open space trail to leave a little more of the open space natural and to give wildlife a more unpressured area.

Connection to Cheyenne mountain state park. More recreational opportunities. Any chance for more neighborhood access points?

Ensure that parking lots are large enough so that trail users aren't parking on residential streets and creating conflicts. What are Single Use Types 1 & 2?

Develop another trailhead. No horses or motorized vehicles

Be sure to have enough parking for demand, planning out for 10 to 20 years.

This is the better scenario as this allows connector trails to CMSP and access for rock climbers and access for many more persons from the public. One drawback is that more visitors means more vehicles and congestion for the nearby neighborhood.

I like the additional trails - challenging, single use - as well as access to CMSP.

prioritize access for rock climbing

This green trail should be designated for mountain bikers. Keeping them off the other trails is highly desirable to me.

Eliminate many proposed trails. Define what single use trail means. Keep a connector trail the swisher trail. Keep one of the two lower trail nodes (parking).

Another parking area further up to connect to higher trails.

I like the idea of single use trails for both hiking and biking

Scenario two seems like the best option, I love the idea of directional bike only trails, this seems like a safe and popular option.

Add single use on the northern edge

I like challenging trails to upper reaches. Please consider hiking only trails in this area. Limit or eliminate mountain biking in upper areas to allow citizens to experience a near wilderness experience.

Move the parking further away from the homes.

This design is biting off too much - especially initially. Do not like the idea of having single use type tracks - too much traffic, and I think the city should first look at what the traffic flow impact will be with just scenario 1, Parking issues here are the same as in scenario 1 - the parking lot needs to be a further distance from the residential street. "IF" after pushing for additional entry/exit points - and the city is unable to come up with any solutions - please install speed humps (similar to what is currently in the Broadmoor area (ie., Mesa St)) to ensure traffic maintains the posted speed limit.

Eliminate most lower level trails. Keep only one trail to Chamberlain and one trail to Dixon. Eliminate one parking lot. Enforce respect for natural environment (quiet, packing out trash, dogs on leash, etc.) Minimize impact to all natural habitats and natural mountain views. Plant wild flowers that will spread. Finish fire mitigation. Buy the Spires drainage dams and address the danger to hikers (maybe put rails on each side of the dam so no hiker falls). Add natural looking fences to separate private property from hikers.

The area is too small to support single use trails

Looks good

Same issue, access through a private neighborhood, and it is not a public road, it is a dirt service road on an easement to the HOA for the servicing of the the two critical debris ponds protecting downstream homes.

Ensure the single use type one is mountain bike only as this terrain presents opportunities for a challenging mountain bike trail, and nearby CMSP already offers hiking only terrain at high elevations. Having a short mtb only trail lower down would limit interest and lead to more conflicts than having the longer mountain bike trail higher up.

Connecting to Cheyenne Mountain state park is great. Just about everything else about this scenario is a major impact to the environment and the trail nodes close to homes is a big issue. There should be less trails and further away from homes. This will also impact the spotted owls the residents have seen there.

Add connections to McNeil trail in the Pike National Forest

Trail access needs to be from another location. Keep out of a private residential area. Residents do not want this in their neighborhood.

I am concerned about the amount of potential trails in this scenario. Too many trails would lead to overuse/abuse and a deterioration of the open space experience for users. I am also worried that if we try to make this space into a space that has "something for everyone" that it will lead to overcrowding and habitat destruction. There are plenty of places in the city for people to walk their dogs. There are plenty of places in the region for people to mountain bike. In my opinion this area should be left as wild as possible and not turned into another city park.

None

I like the concept of the single use trails so that people don't get run over by bikes. If the green trail goes through the forested area, will that affect the protected owls?

Prefer this scenario. More trails and options. Love being able to connect to CMSP

More trails! Access to steeper section and more challenging trails, trail nodes,

This is great. Connector trails to Barr trail and cheyenne mtn trails

Parking looks good. Trails look good

More trails

Love it. Make a dedicated Mt biking downhill trail and also dedicated hiking routes to separate traffic

I see the greatest value in the purchase of Fishers Canyon being the completion of the Chamberlain Trail. I suggest access from the Spires Community be postponed until the Chamberlain Trail link is completed. I believe this would minimize the stress of traffic on the neighborhood.

More designated trails that intersect and form their own little loops is nice.

Eliminate most lower trails. Keep it simple and natural. Add a trail to connect to the Dixon trail so hikers can park at Cheyenne Mountain park and not go through the neighborhood. Have only one small parking lot that is hidden from view of the houses. Leave trees and make trails beneath the canopy of the trees. Keep it simple and maintain the natural environment and habitats for black bears, turkeys, owls, bobcats, and deer. Enforce quiet, packing out trash,, dogs on leashes, picking up dog poop (including the bags - some neighbors throw poop bags instead of carrying them home

dogs on leash ok

I like that scenario 2 has more trail options

I'd vote for no dogs, no bicycles. We have such a history of over-use and trail degradation. would be great to keep this as natural as possible.

No public access from Wellfleet. Trails should be accessed from Chamberlain only.

SingleUse Type 2 is excellent for Mountain Bikers, or Combined Usage, as in California

A connection to the State Park trail system is a great idea and should be explored

I like this scenario and would like to see hikers only as it seems friendlier and safer for flora and fauna

Like the connection to Cheyenne Man State Park. I don't think every open space needs to be for all uses. They each have unique qualities. The rock outcrops here are ideal for backcountry climbing. Myself I like low impact trails for backcountry hiking.

Ensure parking is adequate and opportunity to still protect the environment

Make a trail for only bikers

I like this scenario

More biking trails and access to rock climbing with connecting Cheyenne mtn state park. This is a better scenario than 1

VERY limited parking and NO overflow STREET parking. NO early morning car access or late nite access. Cars should be towed if they park on the street. ONLY homes on Wellfleet are allowed to park on the street.

This seems like a good balance that can appease most users groups, while also providing a valuable connection to the state park.

Low barrier trails too close to private residence backyards; need two ways in and out

This appears to make the most out of the space, with multiple trails and areas for more intense hikes and sightseeing opportunities. Also recommend consolidating to one parking area in the north rather than building two parking areas to preserve more of the trails. Utilize the flatter ground for parking and trail access and keep the land around the dams more natural.

See parking suggestions provided in scenario one. Consider bike and hiking only trails in critical habitat survey area. Would Mexican Owl be more impacted by hikers or bikers. What separation is required between Mexican Owl and humans?

Chamberlain direct to CMSP without hiking through neighborhoods.

Even better than scenario 1! Would love to see all types of trails in this area.

As in the first scenario, connect CMSP through a lower, easier access. Stay out of the owl habitat until we're sure about it.

Like scenario 1, eliminate idea of the Chamberlain Trail and preclude fire hazard activities.

possibly too many trails will attract more people than the neighborhood streets can support. Is it possible to consider Fishers as a pass thru, not a destination? With main THs at chey MTN State Park. And North chey Canon? I like the additional loops lower, and want to consider preservation higher. Can we set up the community to preserve Corall Bluffs in the future?

Even more dangerous to the West!

I like this better, more trails. Could that be a downhill bike only trail? Connections to the state park are nice

9027 more activities and direct route to Cheyenne Mountain

This is the least acceptable scenario as it seems to have the greatest impact and does the least in preserving the natural environment. Reduce parking and relocate parking to be further away from the entrance and nearby neighborhood so that neighbors do not see visitors/hikers parking, etc... Limit to only hikers. Reduce the amount/number of trails as this does not preserve the natural beauty of the area. NO Picnic Tables, etc as this invites potential other issues. ONLY limit to hikers. Limit hours of access.

Less is more! (Less trees cut down, less trails, less impact to natural habitats, less road, less cement, etc.) During the extreme fire mitigation activity, you cut down trees that wild turkeys and birds of prey nested in, you destroyed black bear beds, and you disrupted bobcat dens. (those of us that live here knew where these animals lived)

I like scenario 2 much better than scenario 1.

High visible trail markers as to not disrupt habitat.

Eliminate most of the lower trails. Have two main trails (one that connects to the Chamberlain trail and one that connects to the Dixon trail in Cheyenne Mountain Park). Eliminate one of the parking lots (have only a small lot that requires a parking fee). Run the parking like at The Incline (have people ride a shuttle from a distant parking lot). Your fire mitigation has already impacted habitat for the black bears, mountain lions, turkeys, and falcons -- their presence on Ellsworth, Irvington Court, and Wellfleet already seems more prominent this year. Please keep it simple and natural as much as possible, and whatever you build, please do it in a minimal way so that it maintains the mountain view and natural habitats of these animals. A 4-foot wide trail under the canopy of the trees is less visible and impacts the habitat much less than paved roads, parking lots, picnic tables, and trash cans, and restrooms. Bring the two drainage areas into the property of the park and consider the risk of hiking injuries due to attractive nuisance (the closeness of the trails to the dams and "the coolness of hiking across the dams" and the Spires neighborhood still having ownership and financial risk).

Same scenario 1 comments about potential parking zone and trail nodes apply to scenario 2. One way single use trails makes sense, The additional trails should be sufficiently away from neighboring homes to maintain peaceful quiet environment. Visitor and parking needs to be limited, preferable by a reservations system (if you want to come to the open space, sign up. The additional single use trails are especially close to the neighboring homes which is a noise and traffic issues which would certainly be detrimental to the peaceful and quiet community we so much enjoy.

I think it may be a good idea to connect the Fishers Canyon trail to Cheyenne Mountain State Park. Overall I feel that scenario 2 has too large an impact on both the natural environment and the local neighborhood.

Provide definitions of Single Use Type 1 and Type 2 so I can understand the difference between the two

I hate everything about scenario 2. Please preserve the wildness of this area. Don't develop all of these trails on the property, especially the single use trails (which I assume are for bicycle riding). Aren't there enough places in the city already for people to ride their bicycles, without impacting this beautiful wild area?

Remove the southern parking area that is between the dams. Consolidate parking in the northern area that is flatter and has the accessible trails. Ensure trails connect between Cheyenne Mountain State Park and northern trails.

Do not have the infrastructure to support type 1 and/or type 2 single use tracks. This scenario tries to incorporate too much at once. Start with Scenario 1, then potentially build out towards what is envisioned in scenario 2 once you study visitor and parking numbers.

I like the improved access to the western part of the parcel. Still move parking further from lot lines

Eliminate all lower trails. They won't be used that much, and it will create noise, trash, and significantly impact wild turkeys, deer, and bears. Also eliminate parking lots and replace them with a vehicle drop-off and pick-up area (contract with Broadmoor or another company for hourly shuttle transportation during warm months). Have only two trails: 1 - access to the Chamberlain trail, and 2-add a connection up high to the Dixon trail at Cheyenne Mountain Park so hikers don't have to go through the neighborhood to get to the park. You are already almost there with the trail that goes straight west and then south. Minimize impact to the natural environment and habitats for deer, wild cats, turkeys, owls, hawks, falcons, bears, etc. Minimize noise & trash. Buy drainage basins from the Spires Neighborhood so that public hikers don't fall off the dams and sue the Spires HOA. We don't need the accessible or dog trails. We don't need mountain biking trails, because that will impact water drainage issues for the houses below, and it will impact wildlife trails for deer, turkeys, bear, etc. .

Minimize trails and parking. Have only one trail to access the chamberlain trail and make a high connection to the Dixon trails at the Cheyenne park. Minimize impact to the natural environment and don't allow dogs. Get rid of parking lots and have a drop off and pick up loop only. Or require use of a shuttle like the Barr trail and the incline trails. Don't allow street parking for hikers. Purchase the Spires drainage dams and mitigate risk of hikers hiking across dams. Require hiking only in the trails.

None really. I think connecting to CMSP is a good idea.

adequate parking to keep cars off streets

Scenario 2 seems to have too many trail options that might negatively impact the ecosystem. Again, keeping trail access to the eastern and northernmost parts of the park are preferable.

Connecting to the state park would be neat. Having some hiker only trails is a good idea.

Passing trails near sites of interest like view points or recreational opportunities like rock climbing will minimize the likelihood of people going off trail.

If there is limited access due to endangered species, it would still be nice to connect into the state park

I like the balance of access and support for multiple types of recreation. Would recommend climbing access trails to the cliffs on the middle south section of the property.

Love the trail connections and use of space - it increases access to these public spaces in a way that is supportive for all. I appreciate the balance of wildlife and recreation in this area.

I like the trail connections. Would there be closures for wildlife?

be sure to have enough parking

Make sure that the single use directional trails for hiking or biking are equal. It seems that you always make more hiking only trails and very few biking only trails. Less than one percent of the local trails are biking only trails and that doesn't reflect the tax base

Love the connections and the views. Again, ban dogs to save wildlife, ecosystems, and pleasant experiences by other users

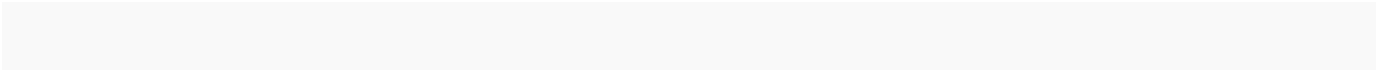
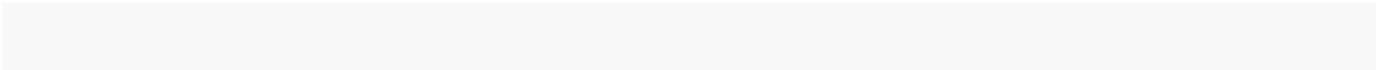
This is the preferred scenario with mtb and hiking specific trails

Looks great as is!

Add climbing access

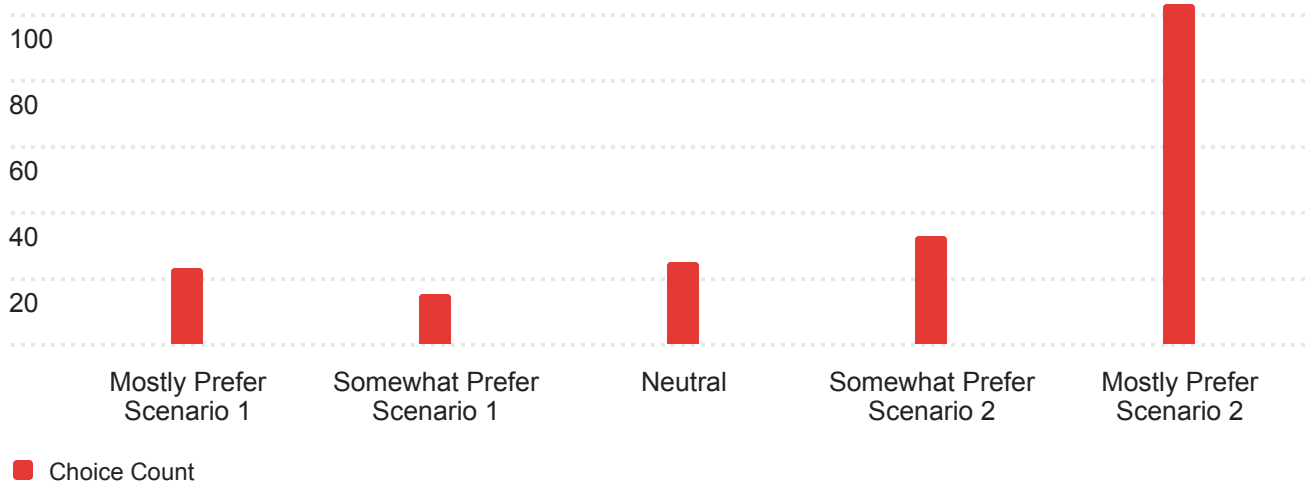
will this include access to rock climbing?

Love it! This spreads the uses around and has multiple trail options.



Q5_1 - What scenario do you prefer?

199 Responses



Q6 - Reasons for your preference:

172 Responses

Reasons for your preference:

More options will keep people on the open space area and off private properties.

I would like for everyone to use and enjoy our Colorado parts and trails. Equestrians and hikers It needs to be excess-able for everyone

Because it has more access through the open space and other trails.

Longer trail with more changes in topography

More trails

More trails are included in scenario 2.

Connector trail

Possible access to equestrian trails.

Connectivity to Cheyenne Mtn State Park

Natural areas should have several different scenarios to satisfy several different types of trail users. There is plenty of room in Fisher's Canon to allow for this diversity.

Any ride there is pristine n eye opening

More options to enjoy the open space, connecting to Chamberlain trail and hopefully connecting to Cheyenne Mountain State Park.

More access and use options.

More recreational opportunities.

More access with greater variety of activities

Reduce habitat destruction. Preserve the forest and the wildness of Fishers Canyon shown in Scenario 1. Scenario 2 is a 'cluster'. Fishers Canyon is a wild area and must be preserved, not destroyed. T

results from the wildlife field survey necessary consideration

More opportunities to use the open space

I like the variety of options in Scenario 2.

Making the connections to other public land parcels should be the priority. But ample parking should always be provided to keep hiker parking off the neighborhood streets.

Unique opportunity for a rugged experience

More trail loop options and more places for users to enjoy which may create less "social" trails on the beautiful property.

I do not want to see nesting raptors disturbed by rock climbers.

Scenario 2 provides the possibility of access to the MacNeill Trail and Cheyenne Mountain State Park. Although there are a number of challenges to be addressed, not planning for these connections will open the upper part of the canyon to a haphazard system of social trails. State Park's current trail system on top will inevitably connect to the MacNeill Trail which in turn will encourage hikers to drop down into Fisher Canon.

Leaves more of the critical habitat survey area undisturbed.

Wider diversity of trail access and potential for use; the open space is more than half usable.

Leaves more open space, although I would like a little more trail option

If my understanding of the picture of Scenario 1 is correct, then the western portion of Fishers Canyon Open Space will have no trails (and maybe no allowed access) since the area is designated as "critical habitat".

More lower elevation trail systems, more parking areas, and some connectivity to adjacent public lands - but need to know the impacts to sensitive habitats.

Developing trail connections can help spread users out so that there are still some natural characteristics. Maybe reduce the number of dog poo bags per acre

More trails making for better usage of the space

Contains both easy trails for the casual user and more intense trails for the more serious hiker. 2 also provides access to other trails including Cheyenne Mountain State Park and trails towards Manitou. Parking will be an issue for either scenario so I think parking and what type of access becomes the more important considerations. Parking should be set back from the homeowners to minimize impact. This could be a popular trail so I do not know yet what size of parking is being considered but I could imagine a lot of parking might be needed. I strongly recommend NO parking be allowed on Wellfleet as an overflow option if the parking inside the open space fills.

Good for walks and visitors not used to high altitude

less trails more open space would be appreciated. Single use trails would be appreciated.

More trails and better connections to regional parks - could do a grand traverse like Boulder's Mesa Trail

More access options and more possibilities for multi use.

The trails are placed better and spread apart nicely

None. I disapprove of the entire project. Perhaps getting feedback from the residents in the neighborhood should have been a priority before moving forward with it.

Access to more areas.

Trail connections and access to the higher terrain

I like the different connecting trails. This provides many options for easy to difficult trails. It also provides people with varying lengths of trails with less congestion. I also appreciate the addition of the rigorous western trail for more avid hikers. As well as the connection to Cheyenne Mountain State Park. It would be nice to have mountain biking, hiking, and rock climbing trails to offer.

More trails overall, plus connector trails are appealing.

Reduced access and reduced fire danger

It seems to have less impact on the area and minimize traffic in my neighborhood

Doesn't present as big of a footprint..more manageable...Scenario 2 potentially incorporates 'too much' for a park with only one entry/exit point.

Less impact to environment and area residents with trails

While I like that there are more trails in Scenario 2, it is unclear whether they are sufficiently far apart to avoid feeling crowded.

Broadmoor will capitalize on it somehow. Cheyenne mountain connection makes sense compared to the two neighborhoods

The only acceptable option is to close it off from human activity and designate it as protected green space!

Scenario 2 because of the access to "wilderness" area

Accessing the highest points is a top priority. And linking to other trail networks reduces bottlenecks in a limited parking scenario.

More trails and more strenuous trails, access to Cheyenne Mtn State Park territory

Access to Cheyenne Mountain State Park and access to owl habitat for bird viewing

More trails offering more opportunities for the space. Also I think it would be greatly appreciated for hikers and mountain bikers to have their own trails to avoid issues. I think a mountain bike look that has a designated downhill only trail would allow those bikers to safely down knowing they will not be running into hikers or mountain bikers coming out. A safe opportunity for each hobby to enjoy their trail time with less concerns and issues.

Options for mountain biking and using the vertical terrain/access to mountain tops

I want more trails. I don't want to harm owls

Give land back to original indigenous caretakers

Connection to Cheyenne mountain state park as well as directional downhill mountain bike trails

No plan is acceptable - As a concerned neighbor, we are fearful of arson, drug use, law enforcement and access - keep it wild and use Wellfleet only as an emergency access

More. Like additions to the front range trail options.

Citizens who purchased this space should have access to responsibly use it. Well designed trails throughout the space will help to preserve it.

Connects to CMSP

Full use of open space without an extensive trail system; preference includes multi-use trails only (ie no single use trails).

I like the access the second plan gives into the Open Space. The first plan creates a space that won't be used by a lot of people and feels more like a plan that would cater to neighbors of the park more than the whole community. I prefer any plan that creates loops for people with disabilities to use.

I would like to use the trails and have access up to the Pike national forest. This option gives more recreational opportunities. However, please do not make quite so many trails in the lower sloped forested areas so that wildlife continues to remain in the area without so much human pressure and presence.

more options for various trail users

Connection to Cheyenne mountain state park. More recreational opportunities.

There are connecting trails to Cheyenne Mt State Park. The handicap-accessible trail appears to be longer. There is more variety of trails.

I could see scenario 1 as short term and 2 as longer term

More trails and more connections.

Provided in an earlier statemen

A wider variety of trails for different types of the users.

more access for rock climbing

The designated trail (for mountain bikes, I hope).

Provide more balance for preserving critical habitat vs. Human use. No dogs allowed on any of the trails. Come up with a scenario 1.5 that would accomplish these goals.

Planning for more trails allows broader use and reduces rouge trails.

It had more options

I like to see more trails, and single use trails for both hiking and biking. I like the connection to CMSP

Separating bikes and hikers seems like a safe trend Nationwide, directional trails allow for safe biking.

Scenario 2 opens up too much of the protected habitat and will contribute to over use and potential degradation of the area through trash, dog feces, dog chasing wildlife,etc.

Assuming trails can be built sustainable and not impact owl population if there.

The Parking needs to be moved further away.

Noted previously. I live in the neighborhood, and have not met any of my neighbors that are overjoyed with the prospect of having all traffic flow up/down solely Ellsworth and Wellfleet. I think the city can do better than this. Scenario 2 is too much.

Connector trail access

Minimal impact to natural environment and to the neighborhood. But it still allows 1 or two long hikes.

More trails the better!

I would prefer that Fisher canyon is only hiking

One is simpler, doable, but the issue is road and parking access which you chose to listen but not respond, and continued with your plans.

More recreation opportunities for people to spread out and enjoy a wilderness experience

Less impact to the environment. However, the connection to Chyenne state park in scenario 2 is excellent. So, I'd combine the scenarios, having a connection to the Chamberlin trail and the Cheyene Mountain State Park and minimizing most of the other trails.

I prefer more trails and access to the upper parts of Fishers Canyon and Cheyenne Mountain. The property is much less intriguing without that access. Scenario 1 would be similar to a mini version of the lower part of Stratton Open Space.

Do not want any scenarios with access from Wellfleet/Ellsworth neighborhood.

I prefer the limited number of trails and trail usage of scenario 1. I would like to see one trail extending to the top of the mountain for hikers that want a more difficult and rewarding hike.

Interest in a connector to Chamberlain, although I can't envision how that would work, as well access to the canyon itself.

Don't really want any but Scenario 1 does less damage to the environment.

More trails and options, more connections.

More trails

More trails are better. Desire for a wilderness experience in the middle of a city, is a little like locking yourself in a dark bathroom. If one want wilderness. Drive a bit and hike into wilderness.

More uses

More trails

More trails and options to connect to the larger cs trail network

This scenario takes most advantage of what is unique about Fishers Canyon.

More designated paths and signage. Like the abilities to have smaller trails or a bigger one to match the feel of the day. Love the detailed focus on preserving important land for the Mexican owl.

Simple and maintains natural environment.

I think it is important to link the trail system in Fisher Canon to the MacNeill Trail that links directly to Fisher Canon from the west. This connection and trail system was shown on the Ormes maps as early as 1913. Although it would be a difficult trail, primarily for advanced hikers, it would also provide access to Cheyenne Mountain State Park on top. Although I am an owner of five acres, near which the upper trail would approach, I see the trail as being beneficial to our property. I am not familiar enough with the access, trailhead and parking issues to provide an opinion.

more parking and trail use.

Difficult to determine what Scenario 1 and Scenario 2 would actually entail from these maps.

connecting to Cheyenne Mtn Park

More trail options

Would love to get that high view!

Less impact. In addition, if you knew this property, this is the only one that is feasible. This property was obviously a bad purchase and a waste of taxpayer money. Shame on you.

More trails

More access for recreation

You must keep Bikers, Dogs, Handicapped, and Hikers SEPARATE. Also Horses, if any. This was same scenario in SantaBarbara, and violent conflicts arose.

Like the expanded access and connection to the State Park trail system

Greater access to the area; links to Chamberlain; links to state park

The upper area has a potential for some unique uses

More trails to explore

I like the multi use trails and the connections

More trails and connection to trails

TRAFFIC driving up/down the 25mph street - we don't need any additional traffic. Wildlife walks in the street. You will need to enforce the 25mph speed limit.

Better balance of recreation use and habitat preservation. Hopefully leading to less user group conflicts and less unsanctioned trail creation.

Extent of trails and addition of single use trails.

Less impact to nature

Makes the most use of the land for trails and sightseeing. Reduces congestion (people/dogs/bikes) that could occur with only two trails as in scenario 1. Do recommend consolidating parking into one lot to maximize land preservation (northern lot).

Offers more opportunities for users. More potential to separate different users on trails.

Better accessible trail, connection to Cheyenne mountain state park

I like the idea of single use trails for hikers. Often the mountain bikers don't have continuously ringing bells on their bikes and I have little chance of getting out of their way. I don't mind moving aside but they come so fast, I don't have much of a chance. I have also hoped for better access to the mountain, so overall Scenario 2 is much more attractive to me.

More and varied access. This will be a popular area and funneling users through a few trails would be hard on the trails and diminish the joy of being outside.

This is a beautiful area that would be so perfect for mountain bike and hiking trails. The connector trails would be fantastic!

Either scenario would work, but less traffic through the owl habitat would be great, and if you could connect to CMSP through a lower access it would be great.

I am only interested in preventing users from starting a fire on Cheyenne Mountain whether by design or accident. Remember Waldo Canyon and Black Forest Fires. This area has the potential to be much worse. The last major fire on the mountain resulted in loss of life just as in the two recent fires mentioned.

Thru way for Chamberlain trail. Leaving part of land untouched.

Safety and the decrease in rescues if available!

More trails and connections, it seems

More trails

Scenario #1 has the least impact to the environment as it has less trails and smaller footprint.

Less is more! (less disruption to natural habitats that have already been impacted by the fire mitigation activity)

Much more trail interconnectivity. I also like the single use options which tend to be lacking in most of our open space in COS.

More options for all levels of outdoor experiences. If it's created, people will be less likely to attempt their own path.

I would rather minimal impact to the mountain view and natural habitats, but I would also like connections to Chamberlain trail and the Dixon Trail loop at the top of Cheyenne mountain to minimize hikers from hiking through the neighborhood. If they want lots of trails, they can easily go to Cheyenne Mountain State Park and mountain bike or have a picnic, etc.

Less visitors leading to less traffic. The parking and trail heads need to be relocated further into the open space to eliminate noise impact on neighbors. Hikers like the peacefulness of open space just like residents like the peace and quiet of the existing neighborhood.

I prefer scenario 1 due to its' minimal impact on both the natural environment and the neighborhood. I am very concerned about the traffic impact to the Spires community. I am also very concerned that any parking not be visible from the neighboring homes.

I don't know how the map preparers define Single Use Types 1 and 2

Because of the relatively limited trail development, this scenario best preserves the wild nature and natural beauty of this site. This is what is appealing about Fisher's Canyon and it shouldn't be turned into another Blodgett Open Space with every kind of activity and trail under the sun. The main problem with this plan (and any other plan) is the single access point and the impact this will have on the existing neighborhood. If another access point can't be found (best case) then at least situate any parking lot as far away from the existing neighborhood (deep into the space) as possible to help minimize the negative impact. Use of the space should also be limited to hiking and rock climbing, with bicycles and horses only able to traverse the property on the Chamberlin Trail, but not access it via the Wellfleet entrance.

Provides lower and upper areas, which connects all trails and achieves the purpose of all the investments made in the project. If Scenario 2 is not executed then it seems like a waste of resources.

Based on your current parking and traffic entry/exit - I would not increase trail types more than walking trails. As mentioned earlier, would like to see additional entry/exit points vice funneling all traffic up/down Ellsworth and Wellfleet - not right for long term homeowners. Scenario 2 needs to be studied more (traffic/visitor flow) once scenario 1 has been in place.

Better trail system

Combine scenario 1 & 2 with only two main trails to minimize impact to wildlife and the quiet natural environment.

Minimal impact to the natural mountain environment. Minimal impact to habitats for wild turkeys, bears, mountain lions, deer, bobcats, birds of prey, etc. that have already been severely impacted by the fire mitigation. Minimize noise and destruction of the natural environment

I think the access to the Western, upper section of the space is important. Longer accessible trail below, more parking.

like more options for trails and single-use trails

more options to explore the space and more connections to other trails. I don't know what the point is if we can't take full advantage of this beautiful space.

Less impact upon the ecosystem and a buffer to the surrounding communities.

Seems to provide more potential access to sites of interest.

I'd love a steep trail to run on.

It has single use trails for multiple user groups, and seems to have more trails in general.

Scenario 2 allows access to the full public property, greater variety of connections to other public properties, and provides options for many different types of recreational use.

Scenario 2 is a more balanced scenario, appealing to and supporting access for all instead of a localized group of people. It has more options for trails and different types of recreation--which supports folks from all walks of life getting out and enjoying the public spaces in our beautiful city.

Access to state park and McNeil Trail, more interesting rocky terrain for hiking.

Connectivity to Cheyenne mountain state park

more trail connections, also more trails so people are more spread out, not concentrated on one trail. More ways to reach Fishers Canyon.

I like that there are a few more trail connections. It gives you flexibility with what type of activity you want to do.

Scenario one doesn't do anything except allow you to park and stand there and look west. At least scenario two has a couple trails in it. If people can't access the park to enjoy it what's the use of having it?

Access to State Park from within Fishers, single use tracks, and possibility of climbing areas.

Seems like scenario 2 offers more access. But if it's a matter of protecting owls, scenario 1 is nice too

Scenario 2 if there are fun bike trails that are directional and hiking separate it enhances the enjoyment for both user groups and there is a severe lack of directional single purpose trails in the city area

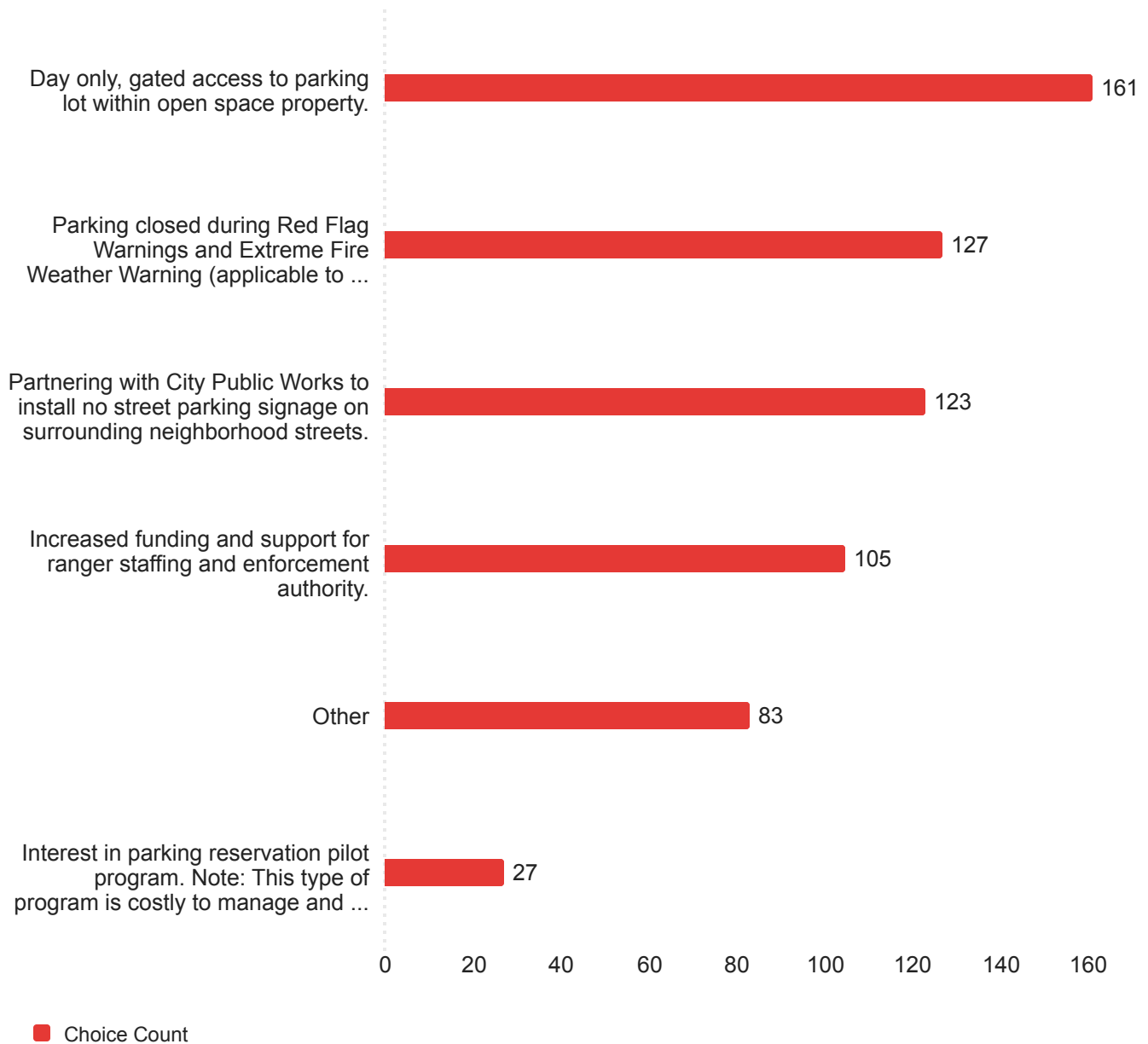
Scenario 2 provides more options for people of different abilities.

i would love to see more use of this space for different types of activities.

More hiking loops which spreads out the users. More people can have a quiet interaction with nature.

Q7 - In open ended comments and feedback from meetings, one of the biggest concerns voiced by the public centers around parking and access. Some of the public shared unease over potential overcrowding and fear of risks to property and safety. The following management strategies could be used to help manage access in a sustainable fashion. Which ones do you prefer? (select all that apply) - Selected Choice

205 Responses



Q7_6_TEXT - Other - Text

82 Responses

Other - Text

ensure adequate trailer parking for horse trailers.

Adequate equestrian parking

Please implement parking area large enough for horse trailers.

If there was access to the equestrian trails in Cheyenne mtn state park, there is parking there plus a fee to get in. The riders would ride in and back out.

Nobody adheres to street sign laws...

If I were a citizen that lived in this neighborhood i wouldn't want to see multiple "no parking" signs in my neighborhood or in front of my house.

Parking will be always be an issue so much thought must be placed on a solution. There may not be one...

Move parking area further away from housing development. Monitored (camera) entrance/exit and monitored parking areas.

No gate, no neighborhood street parking signs please. I live on Ellsworth, and it would be a dream to get up early and hike with a headlamp and watch the sunrise up on a rock. Security cameras are the norm and there is only one access point. A security camera at the access point would record anyone whose actions may be cause for concern. Use existing technology.

If a trail system into CMSP becomes viable, and hopefully it will, some sort of Park pass will be necessary and appropriate. The same issue will come to the forefront if and when the NacNeill Trail from Old Stage Road is formally connected to the Park. Currently, the Dixon Trail off the south end of the mountain is the only formal access to the upper part of the Park. That will change on the north side of the mountain and this is a good opportunity to start planning for it.

Tell the broadmoor to stop being so uptight

1. Provide an alternate option of public bus transportation to entry point. Just like Manitou Springs does for the Incline.
2. Negotiate an agreement with State to allow a new paved road in Cheyenne Park to western entry point of Fishers Canyon. (Parking lot to be worked out.)
3. I do NOT favor a reservation system. Leave Fishers Canyon like Red Rocks with open parking.

work to find additional access avenues

There will need to be some kind of regular ranger or enforcement activity. No overnight parking. Absolutely no camping. Absolutely no homeless camps (immediate cleanup should be exercised, like cleanup THE DAY the camp is discovered). Homeless camps bring crime, trash, and public health concerns. Based on parking for trail access in other Springs areas, the parking may need to be large (more than 20 spots). The size of the parking will be a point of contention. What type of use will also be difficult to settle on.

Funding should not be INCREASED for rangers. Rangers are an integral part of this program and should come from existing funds.

private property rights should be priority. Including limited parking and access to surrounding area private land.

The Broadmoor enjoys many city benefits - they should permit public access for an additional trailhead.

Gated access is a significant restriction for early risers so I am generally opposed. If there must be a gate, it needs to open early(4 am). Enforcement can solve most problems.

I didn't build my house up here to look at a parking lot. You are decreasing my home value. Would you like to have this in your backyard????

Street parking limitations are always a go-to for local residents, but as long as the street is not actually blocked or too narrow, parking should be allowed. Perhaps one side-only if needed. I live in Manitou. We manage narrow streets and it is not a problem. Don't let the NIMBY's dominate this plan.,

O access due to fire danger

Connect to existing parking at Cheyenne mountain state park. Strict enforcement of traffic, parking and hours of operation laws. You should also explore other options for parking as the houses you have labeled as private property and on public streets and the state could try harder to get some sort of access. Seems the state is taking the simplest solution and not challenging people with more money.

monitor speed limits up/down Broadmoor Bluffs, Ellsworth and Wellfleet...

Depending on the results of the owl habitat survey, would it be possible to provide/encourage access to the Open Space through Cheyenne Mountain State Park and/or Pike National Forest, thus utilizing parking in those areas?

Access via cheyenne mtn state park.

Non-resident and unnecessary traffic in our neighborhood is unacceptable in any form. We came here for peace and quiet and what your proposing devalues our property and our peace!

No parking; access only via Chamberlain trail and Cheyenne Mountain State Park to really upset people

Making sure there are trash cans and doggy bags so it encourages people to stay responsible for keeping the open space CLEAN.

Dont limit access to public lands based on hours or private land access concerns.

Land should be under care of indigenous communities

The city MUST engage in a study of alternate access points - Stonebeck is one, requesting access from the Space Force to NORAD Road has not been explored and no mention is made of condemnation to gain access if needed across private land. No indication has been made or offered of ANY options other than Wellfleet being fully explored.

easy trail access from the north and south for those who want to visit without a car

Implement city wide open space non-Colorado Springs registered vehicle paid parking.

For the greater good of the whole Colorado Springs community, I would like to see a parking lot that is open during park hours, 5am to 9pm, and has more than a few parking spots. Online reservation systems shouldn't be used because they are a barrier to people without access to internet and to those who are challenged to use technology.

Some of the proposed additional access sites are in gated communities. Granted public access to these neighborhoods would fundamentally change the amount of people in those areas, and likely substantially increase crime and fire risk to those homes.

Show fire access to interior of property....how can a wildfire burning in the open space be combatted to save nearby neighborhoods?

Have provisions to close the area if there is too much pet feces left on the trails.

Gate, but with standard park hours.

If no street parking, then parking lot should be large enough, and no street parking should apply to the neighbors.

If you put more parking within the park, neighborhood should not be affected.

Through additional funding do an additional pilot shuttle program. That allows no parking and requires shuttle. Pilot to potential implement at north Cheyenne canon and other over used areas

Move the parking further away from the homes

Parking lot should be further away from residential homes - people move up here for the nature and quiet - having a parking lot in your backyard is not a fun thought.

Consider transportation like at the Incline with a van or bus to a distant parking lot. Consider acquiring 440 and 445 Irvington court for a ranger station and nature center. (It has access from Paisley and Irvington Court so the traffic won't all be on one road.

Come in from Cheyenne Mountain State Park beginning with a trail and negotiating a road access. All the tables around me suggested the same as the first priority.

Perhaps a public private partnership to offer shuttles to the park from areas with more parking

I like the idea of no parking on the surrounding streets, as long as residents and their guests can park there.

I think there should be a sufficient amount of parking so people aren't tempted to park on the neighborhood streets but not so much that it ruins the landscape and becomes an eyesore. If there were too much parking it could potentially cause overcrowding in the open space as well. The parking capacity should be based on the amount of trail access and compare to other open spaces like Blodgett Peak and Stratton.

No parking lots in a private neighborhood!!!!!!!!!!!!!!

Would it be possible to identify areas in surrounding neighborhoods where parking might be available for a limited number of vehicles (i.e. less populated streets or cul-de-sacs or existing parking lots) so that parking could be spread out and not concentrated at the open space? I would be willing to park a mile or two away from the space and access the site on foot using existing sidewalks or newly constructed pedestrian only access points.

Street parking by permit only so that residents may still park in front of their own homes.

I think the get off my lawn attitude is a little unfounded. All the people I meet on the trails are the nicest people. I think people homes will be just as safe. And property values will go up.

Consider managing it like the incline with time slots and transportation shuttles to/from the park. Shuttle and parking fees can pay for itself. Add fences and signs to protect private property

pay to park, buy a pass

There should be no access from the streets as this will bring dangerous traffic to the whole neighborhood. If you pursue this I will organize a lawsuit against every member of TOPS and the city and county employees to be sued individually.

Parking Reservation should be done, for two-day only. No long term camping.

Add a parking status sign with access hour info at the base of Broadmoor Bluffs Drive (possibly at Farthing?)
Update signs indicating closure during Red Flag / Fire Weather periods

I really love that I can access trails for an early morning bike ride/run where gate might not be opened yet. I do like the idea of keeping out partying though somehow with evening access

Two ways in and out; less impact to one street

Consider fee system. Ski areas have been using for years. Hearing the same issues for FCOS as Blodgett Open Space.

Conflicts with that neighborhood are going to make this a painful process. Keep seeking an additional access point solution with parking to lessen the burden of this one hotspot.

We would love a pedestrian gate from the star ranch neighborhood into the park.

Don't let NIMBYs kill this project

The fact that you are having to install NO street Parking on surrounding neighborhood streets is very concerning and clearly indicates there will be issues with people disrupting the surrounding neighborhood. This is turning the surrounding neighborhood into a city environment, not a neighborhood...lessens the quality of life for the neighbors.

If this is the ONLY option...neighbors should be issued stickers/certificates to place in their cars if they are parking on the street..

I would put the additional funding that you have access to fixing/repairing other already existing parks and playgrounds that have shown they are in disrepair and may have safety issues.....also repair the roads that are in disrepair in many locations throughout the city.

Minimal roads, minimal cement, minimal parking area, minimal smells that impact animals. Leave it as natural as possible. Minimal impact to the canopy of the trees, black bear beds, bobcat dens, bird nesting areas, etc..

Maximize the parking within the allotted space by keeping the landscaping and other amenities to a minimum. Identify other parking areas (existing or those that can be created) within walking or biking distance and designate them as overflow parking. There's nothing worse than opening more open space but then limiting public access to it.

Make sure parking lot is large enough so that it doesn't impact neighborhood. Also include dog waste receptacles and restrooms.

Have shuttle busses like at The Incline and 7 falls. This service could help pay for itself with a small fee. Have a pick-up and drop-off location for hikers.

Enforce NO FIRES, NO SMOKING, NO OFF LEASH in the open space. Trash cans and pickup would be required if picnicking is allowed; public toilets as well. Both may impact the serenity.

Install no street parking signage and ENFORCE the parking ban. Nearby residents should not have to be the "bad guys" , reporting parking violations to the City.

Place any parking lot as deep into the property as possible (i.e as far away from the existing neighborhood as possible). Limit access to hikers and rock climbers. No access via Wellfleet for bicycles or horses (only bicycle and horse use would be as through travelers on the Chamberlin Trail).

In addition to signage - distribute residential parking passes to residents.

Contract with a company like the Broadmoor does for 7 Falls and provide shuttle-only access. Replace parking lots with a drop-off/pick-up driving circle.

Pick up and drop off driving circle only. Contract with the Broadmoor for seasonal transportation and require use of shuttle pick up and drop off similar to 7 falls or the incline trail.

By no means should there be a parking reservation program.

In Boulder some of the parking is free for city residents. Installing a pay to park station there may discourage over crowding and would be a perk for those of us who live here. As a resident I am paying taxes to have great spaces like this, and while tourism is important I don't think we should allow them to overrun our spaces.

I would not be in favor of limiting access through reservations or day use. Because of the proximity to national forest this has potential as a gateway to multiday recreation. Reservation access is extremely limiting and is not as inclusive of those who may prefer spontaneous recreation or not be particularly tech savvy. The use of a shuttle or public transportation infrastructure would be beneficial to the parking and the environment.

Prioritize building connecting trails to adjacent parks to increase access options.

Provide enough parking in the lots, and street parking won't be an issue.

Standard park hours with gates.

Provide enough parking in a lot, so overcrowding into the neighborhood doesn't happen. I highly doubt crime will increase in the neighborhood. Perhaps, do a quick public safety study of other neighborhoods with public spaces to see if this is a valid concern. If data shows that crime is not higher, provide that to the concerned citizens.

No additional taxes or fees for parking or ranger people

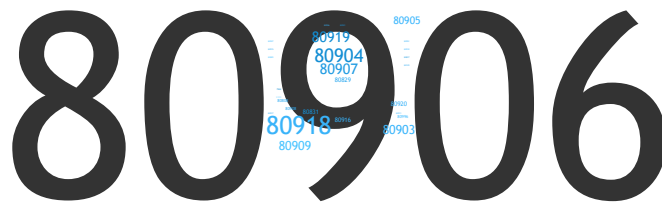
Q8 - The final questions will help the planning team understand who has participated in this survey. Did you attend the community meeting on April 24, 2024 at Cheyenne Mountain Jr. High?

204 Responses



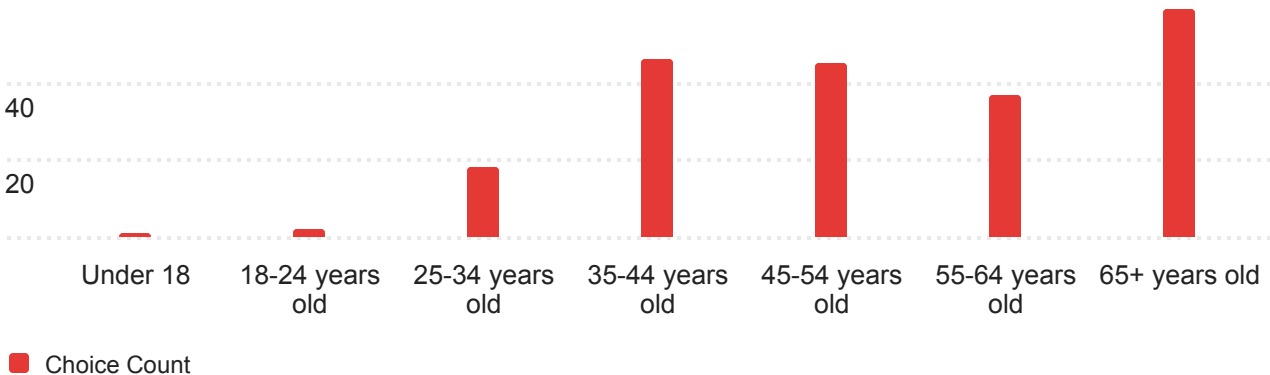
US Zip Code - What is your US Zip Code?

206 Responses



Q10 - How old are you?

208 Responses



Q11 - What type of passive (non-motorized) recreation activities do you identify with? (Please choose one)

203 Responses

